

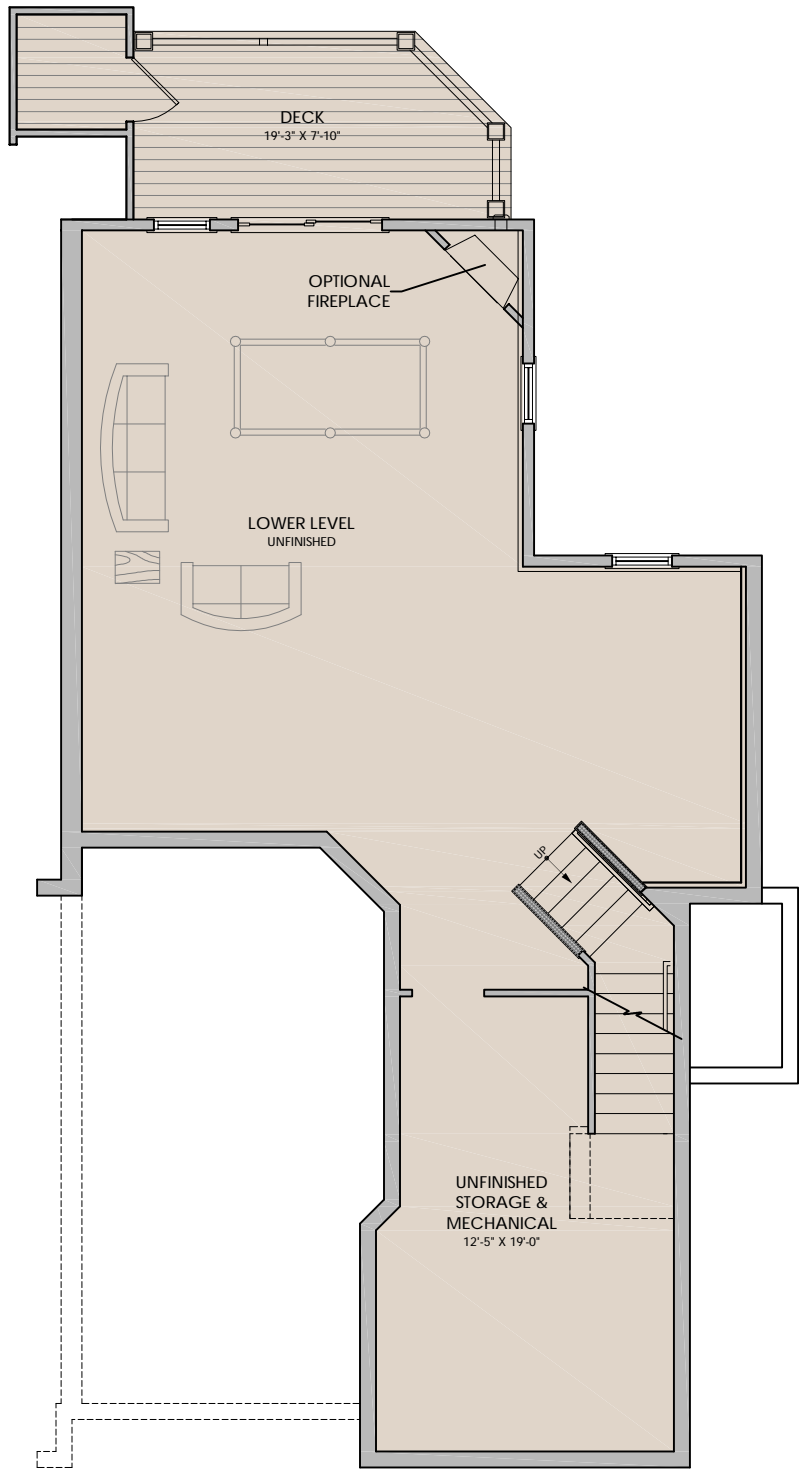
UNIT TYPE "A1"

LOWER LEVEL BONUS SPACE	=	879 S.F.
DECK	=	138 S.F.

FIRST FLOOR FINISHED SPACE	=	881 S.F.
GARAGE	=	294 S.F.
DECK & PORCH	=	301 S.F.

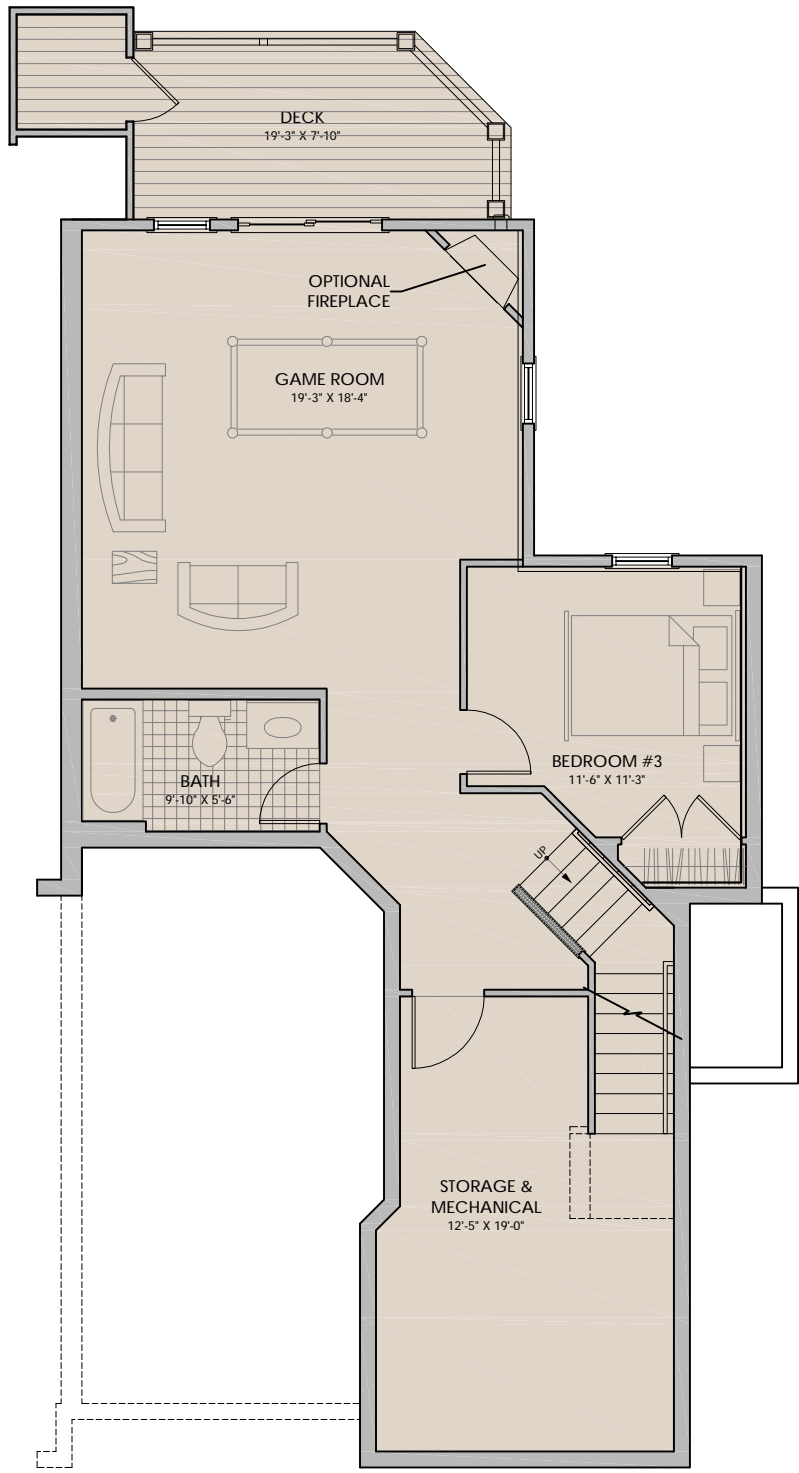
SECOND FLOOR FINISHED SPACE	=	943 S.F.
-----------------------------	---	----------

TOTAL GROSS LIVING AREA (FIRST & SECOND FLOORS)	=	1,824 S.F.
TOTAL GROSS LIVING AREA (LOWER LEVEL)	=	879 S.F.
TOTAL AREA (PATIOS, DECKS, PORCHES)	=	439 S.F.



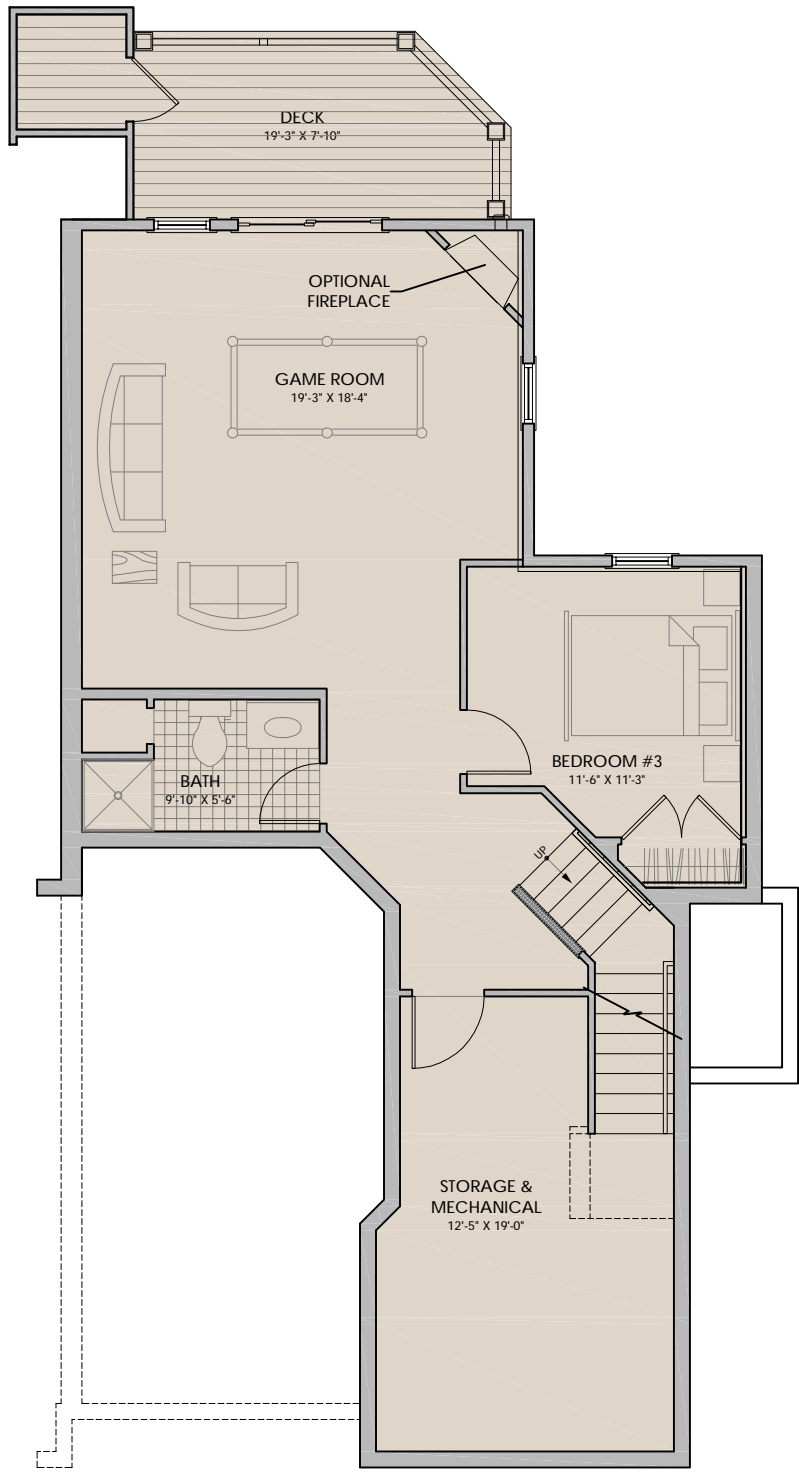
LOWER LEVEL PLAN - OPTION #1

1/8" = 1'-0"



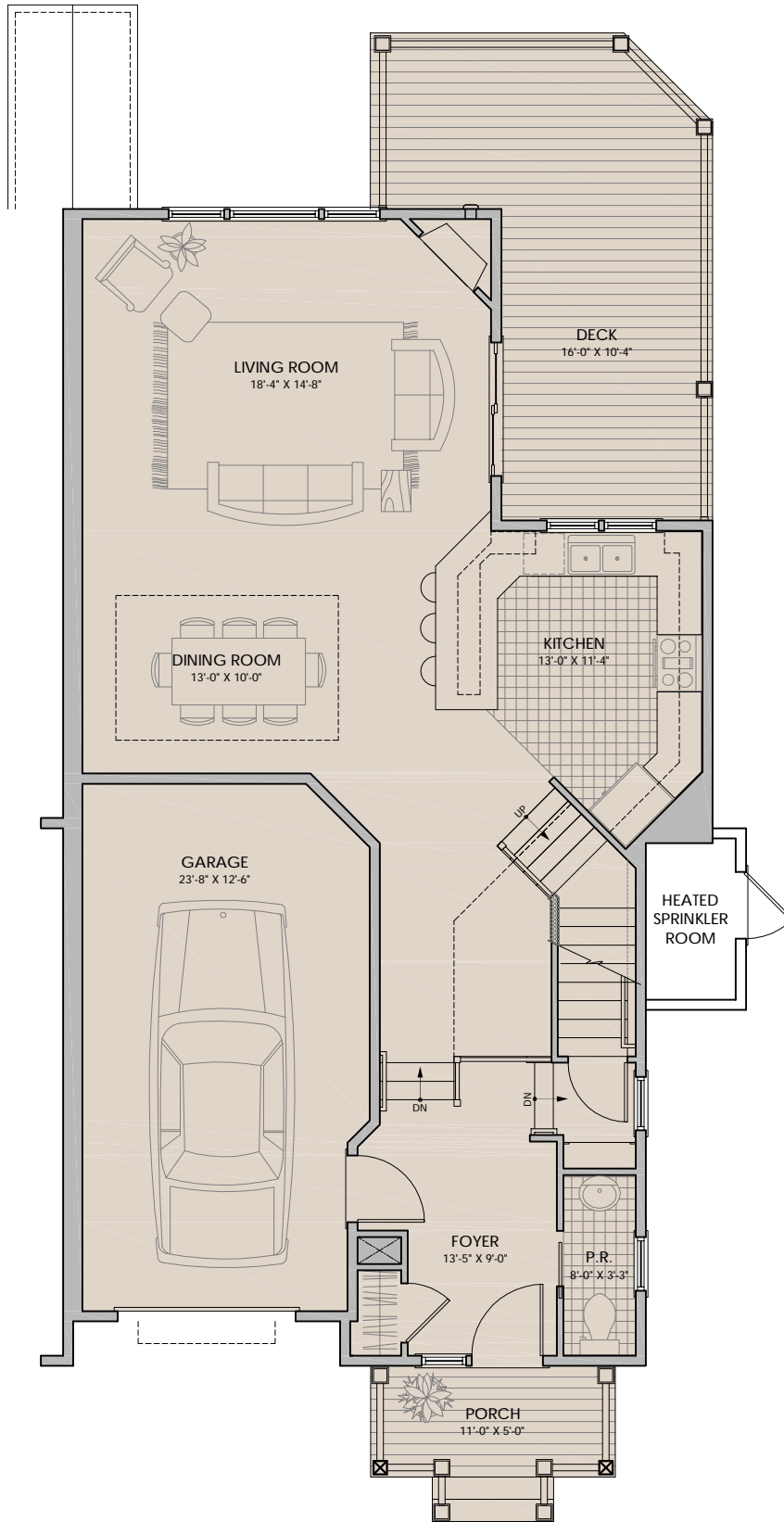
LOWER LEVEL PLAN - OPTION #2

1/8" = 1'-0"



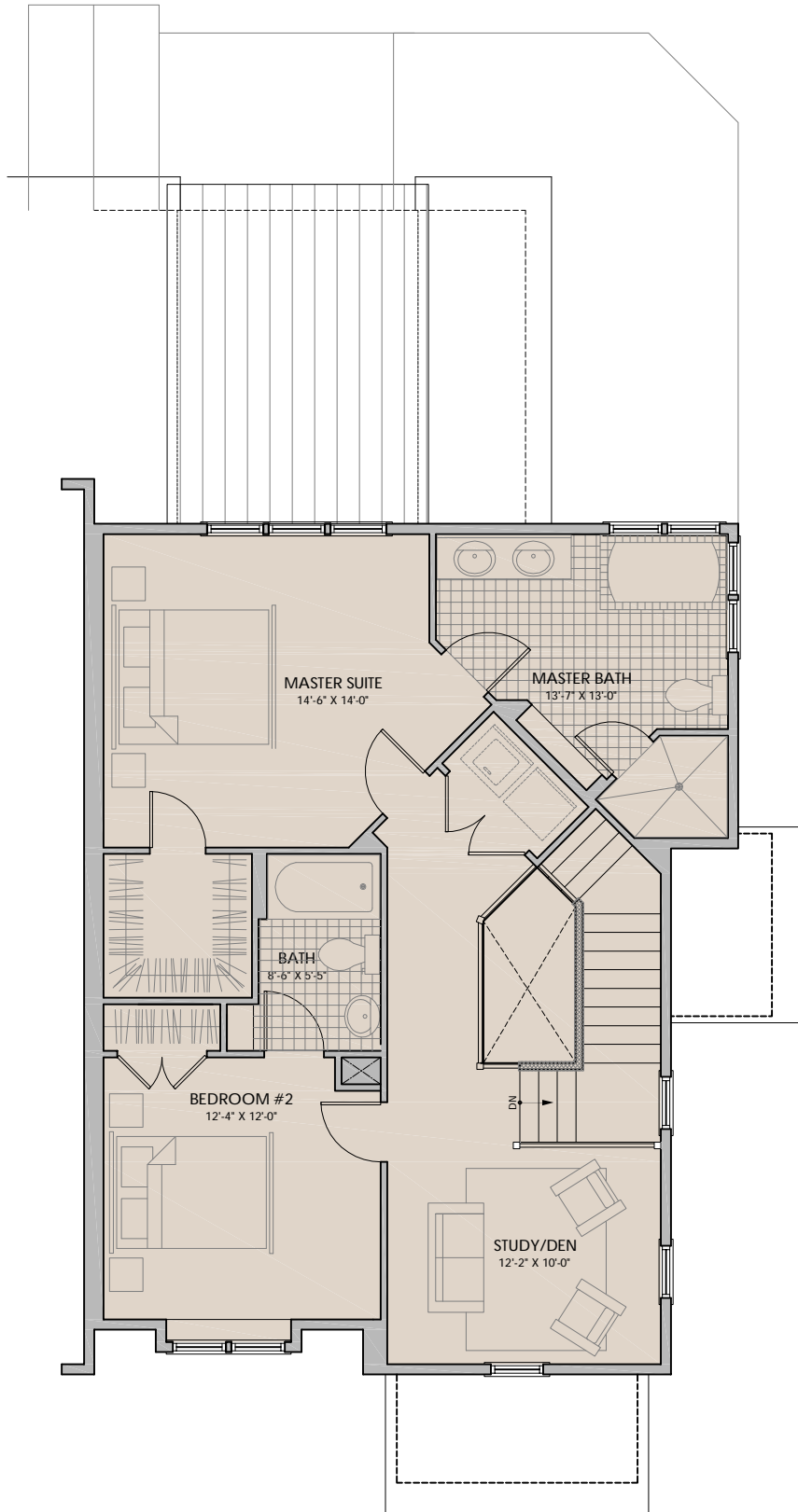
LOWER LEVEL PLAN - OPTION #3

1/8" = 1'-0"



FIRST FLOOR PLAN

1/8" = 1'-0"



SECOND FLOOR PLAN

1/8" = 1'-0"

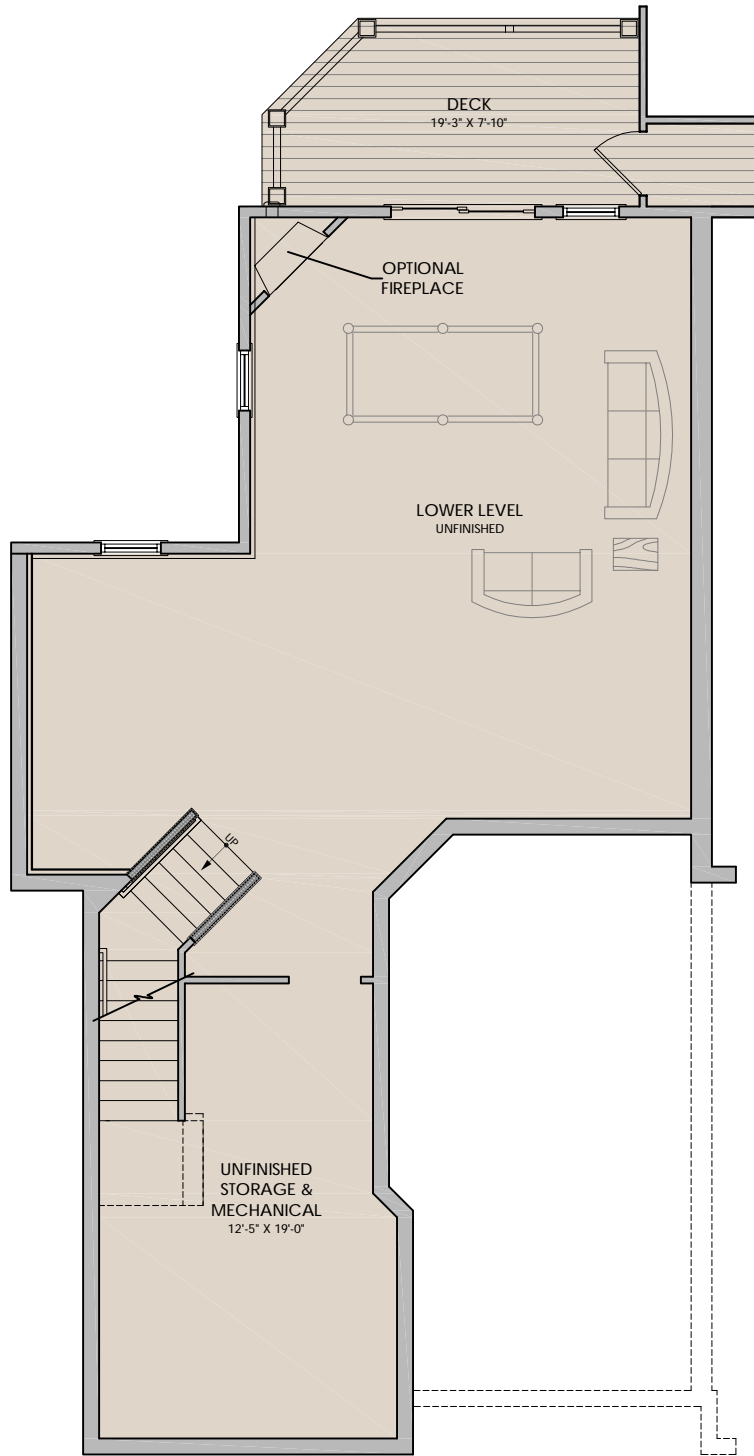
UNIT TYPE "A2"

LOWER LEVEL BONUS SPACE	=	879 S.F.
DECK	=	132 S.F.

FIRST FLOOR FINISHED SPACE	=	881 S.F.
GARAGE	=	294 S.F.
DECK & PORCH	=	301 S.F.

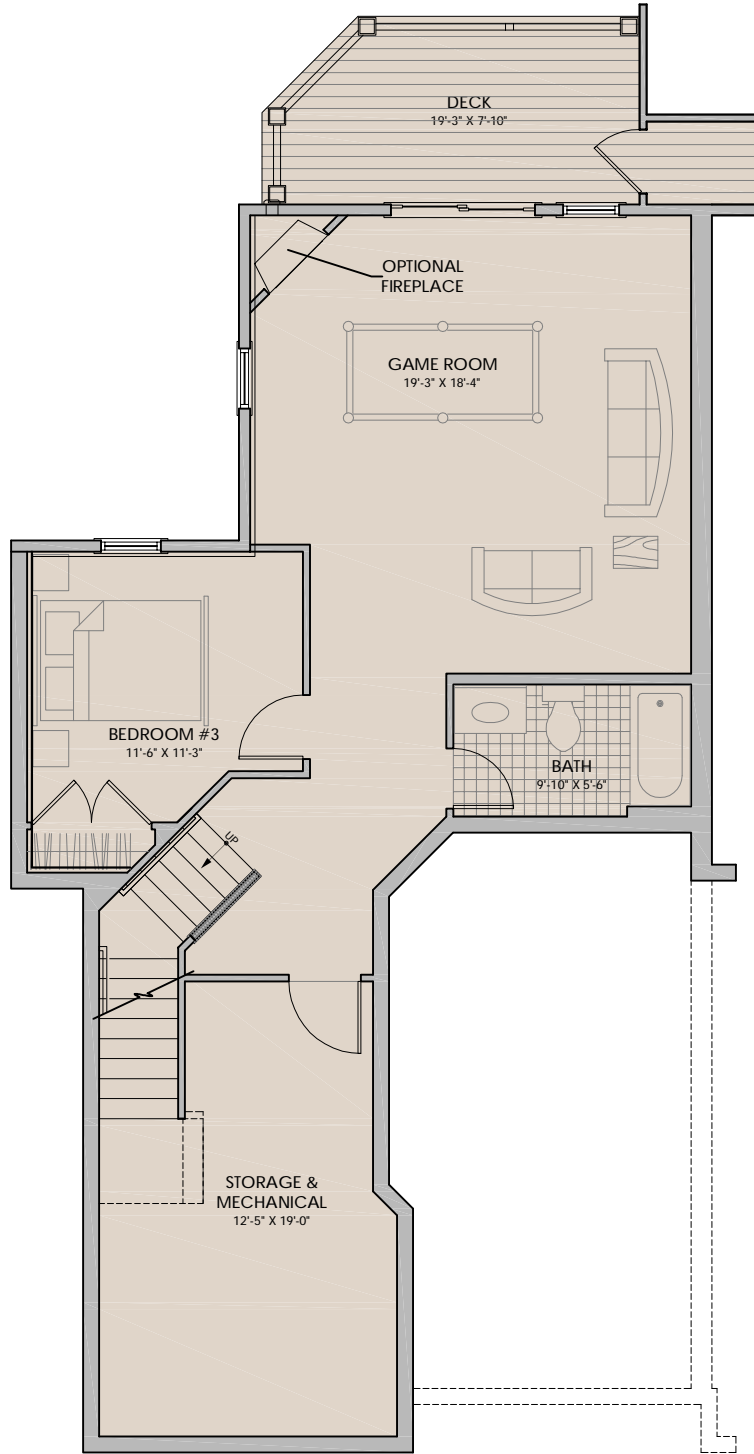
SECOND FLOOR FINISHED SPACE	=	938 S.F.
-----------------------------	---	----------

TOTAL GROSS LIVING AREA (FIRST & SECOND FLOORS)	=	1,819 S.F.
TOTAL GROSS LIVING AREA (LOWER LEVEL)	=	879 S.F.
TOTAL AREA (PATIOS, DECKS, PORCHES)	=	433 S.F.



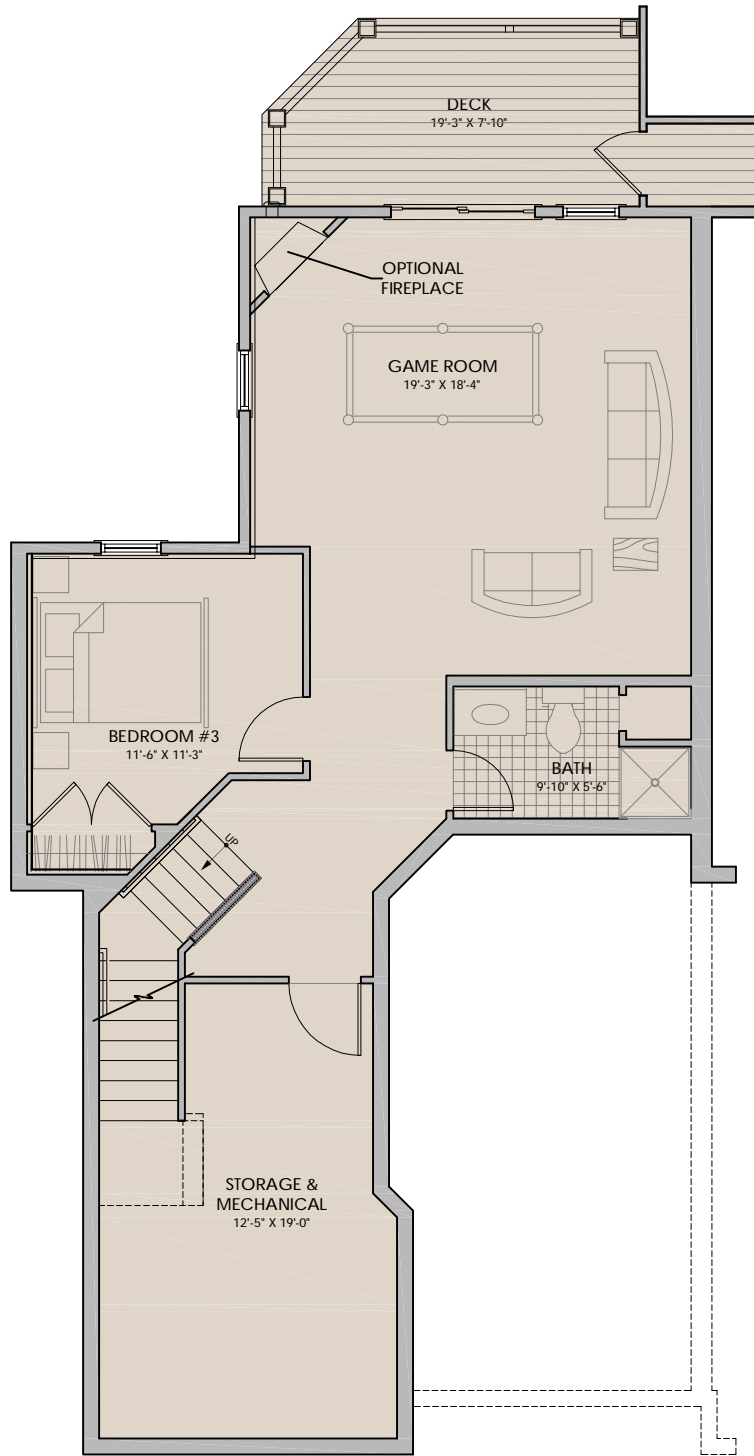
LOWER LEVEL PLAN - OPTION #1

1/8" = 1'-0"



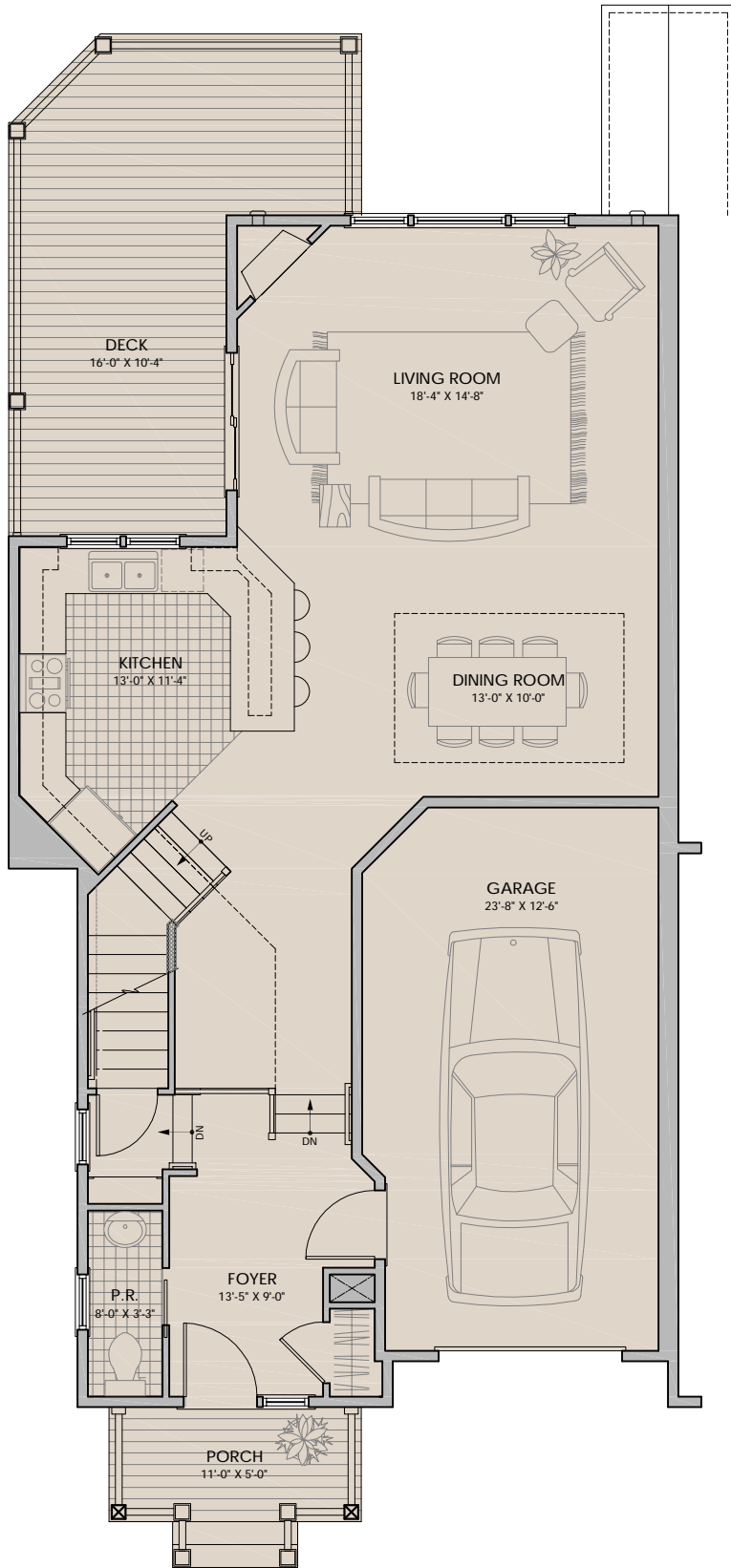
LOWER LEVEL PLAN - OPTION #2

1/8" = 1'-0"



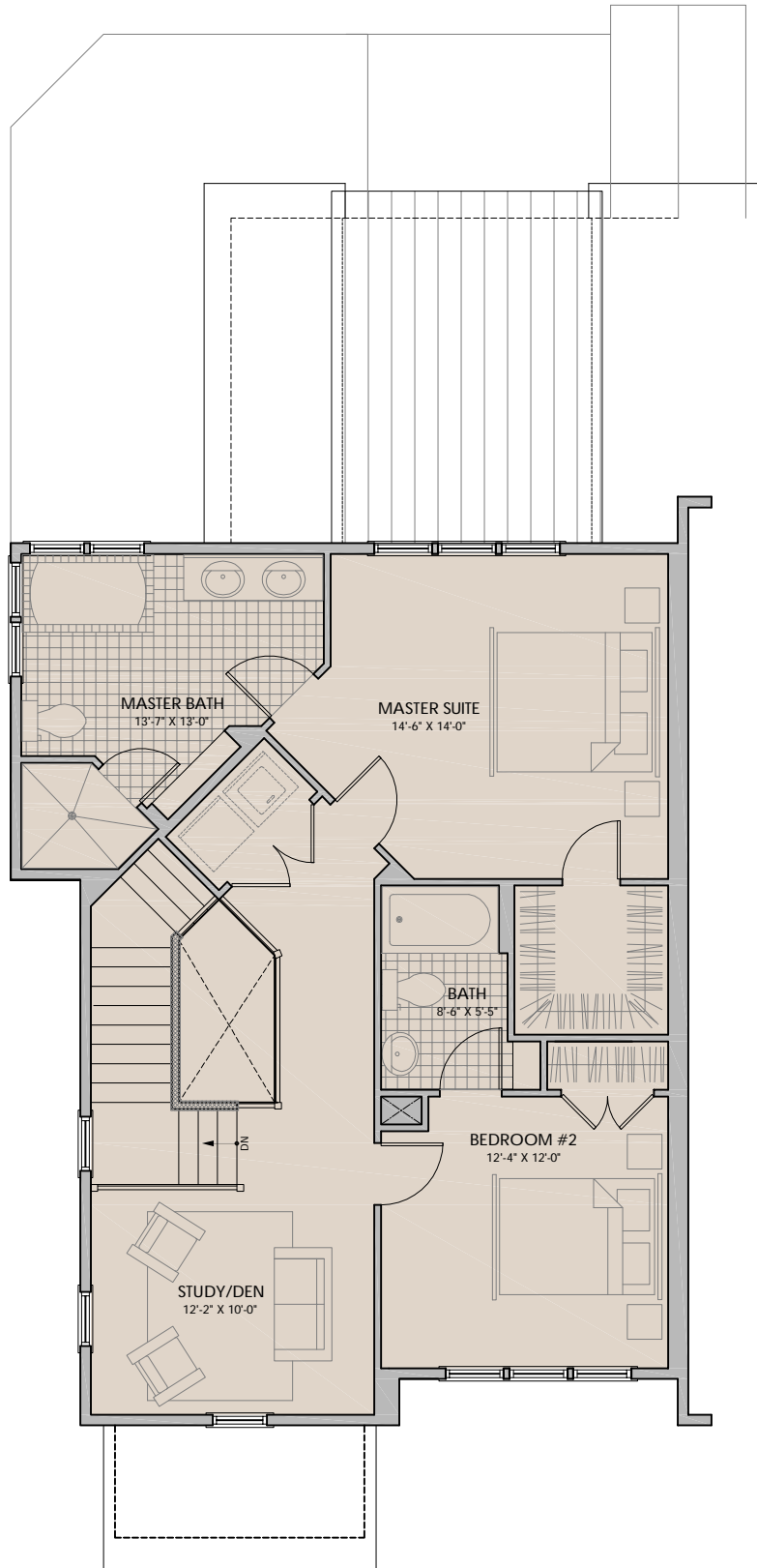
LOWER LEVEL PLAN - OPTION #3

1/8" = 1'-0"



FIRST FLOOR PLAN

1/8" = 1'-0"



SECOND FLOOR PLAN

1/8" = 1'-0"